

Industrial Rugged Video Borescopes

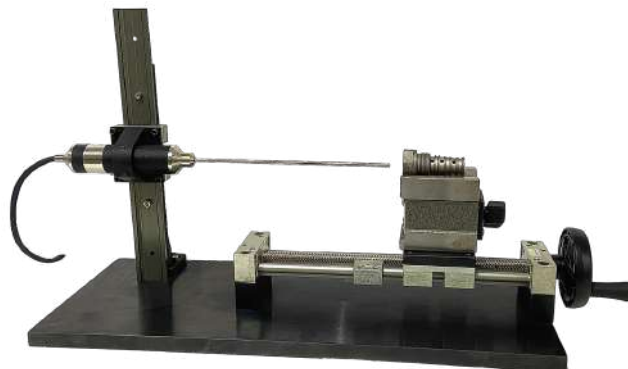
Desktop 8" Rugged Industrial Vision Inspection Borescope



5.1" Heavy Duty Industrial Rugged Video Borescope



10.4" Industrial Computer with Software with Rigid Probe with Costemised Fixtures



3.5" LCD Industrial Rugged Video Borescope



Optikē
by Khush

- Probe outer diameter - 2mm, 2.4mm, 2.8mm, 4.0mm, 6.0mm.
- LCD in a Rugged Housing
- 90° on all 4 Directions Articulation
- USB/HDMI screen output
- Display Resolution - 1024 x 768 HD Screen
- 32 GB Memory

- Picture editing function
- Built in wireless Bluetooth and WiFi modules
- 5,00,000 pixels HD industrial camera
- Super long service time of power supply
- 4 corners rubber coated anti-collision
- Expandable large storage space

Brief Introduction

Our Optike Brand Industrial Rugged Video Borescopes , a fantastic tool for visual inspections in situations where the area that needs to be inspected is difficult or impossible to view without disassembling. Numerous industries, including aerospace, precision casting, energy and power automobile manufacturing, bridge construction, etc., use these bore scopes. We provide a variety of bore scopes, each with unique specifications.



Our Video Borescope features a diameter of 2.0mm, 2.4mm, 2.8mm, 3.9mm, 4mm, 5.9mm, 8mm, and different lengths. The Dual View technology eliminates the need for threaded tips. You can get a single scope with two independent cameras and toggle between views without removing the scope from the inspection. We are offering 4-way joystick articulation, image and video capture, 4-hour battery life (8.4V) combined with a compact, portable, and durable design. It easily displays and captures crystal-clear video and still images, and it does so using a lightweight and user-friendly compact design. It is widely used, can be used for Detection and diagnosis of engine cylinder, fuel engine, silencer, transmission systems, differential, water tanks, fuel tank, gearbox, coke, block, etc.

Modular design

After months of use, the steel strings will extend, and the tip's articulation may not bend as widely. In this case, the probe may need to be replaced, but this product has a special feature. If the probe is unable to bend after a few months, there is no need to return it to the factory for repairs. Anyone can easily fix articulation within 2 minutes with a screwdriver in no time.

Easy to repair or replace the spare parts



A screwdriver quickly fixes tips' articulation within 2 mins



Types of Probes & Lens

- We are offering a modular design the host or probes are detachable and have different diameters.
- Newly designed articulation mechanism, jovial control, 360-degree direction Compatible with (Optional)2mm, 2.4mm, 2.8mm, 3.9mm, 4.0mm, 5.8mm, 6.0mm, 8mm self-compatible with different probes.
- Pixels of lenses: 160000/300000/1 million/2 million are self-compatible.
- we are offering front/side view, two in one, twin lines, short/far focus (According to the Customer Requirements) 4-way joystick articulation, 4-hour battery life combined with a compact, interchangeable insertion tubes, and a single camera option .
- It has a Single lens and fiber optical light

customized tips



**Ø6mm twins lenses
(short/far focus) for
narrow or wide space, just
it! No waste of time to
change lenses.**



**Ø6.0mm inner Clamps tunnel,
easy to pass and no stuck.
Optional: crocodile squeezer,
quad-paw clamp.**



Dual lenses Diameter 4/5.8mm & invented twins lenses (Optional Lens Diameter)

Our Product having different Probe Diameters Options we will provide the probe to Customers As per their Requirement.



Φ 6.0mm inner clamp via tunnel

Φ 6.0mm twin lenses front view

Φ 5.8mm front & side view dual lenses

Φ 5.8mm front or side view

Φ 4.0mm front & side view dual lenses

Φ 3.9mm front or side view

Φ 2.8mm front or side view

Φ 2.0mm front view w/ 360° direction
(520,000 pixels)

Rugged Housing Touch Screen

All these models having Rugged Housing Touch Screen Effectively restores real colors and presents more vivid images. A larger visual angle and good image quality in all directions effectively reduce eye fatigue and improve observation comfort. The touch screen is sensitive and easy to operate, which greatly improves the efficiency.



8-inch display



Color HD display



Wide-view perspective

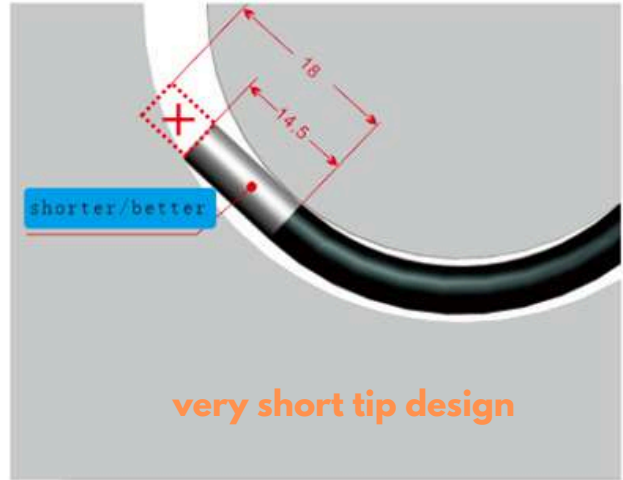
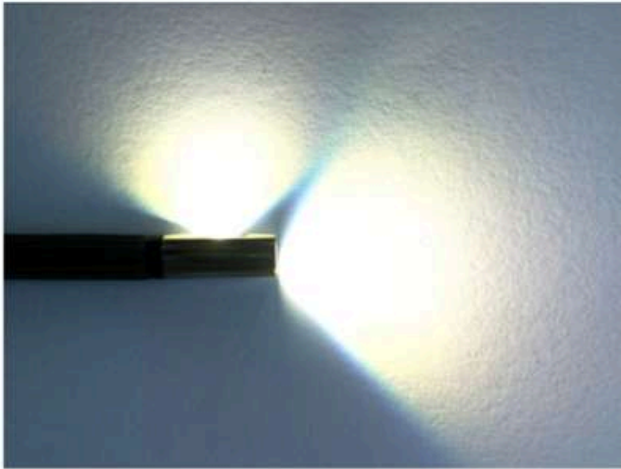
5,00,000pixel HD Industrial Camera

With a built-in high-quality image sensor, delivers clear and richer images. The video image is smoother, and the picture has no delay and drag, which is convenient for rapid and accurate identification of tiny defects.



Diameter 6mm 500,000 Lux





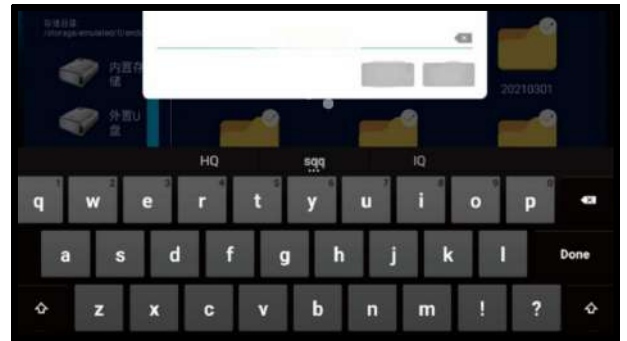
- Dual lens can displayed simultaneously just figure, top the Icon for switch or hidden.
- Front and side view both are mega pixels display on the monitor simultaneously, the real time, picture for flow inspection.
- twin lenses with short/long focus for narrow/wide space inspection quickly to get the flow and no waste time to change the lens.
- One host working for different insertion tubes with different pixels.



1. Reset file storage path, new folder create, Rename, Copy delete

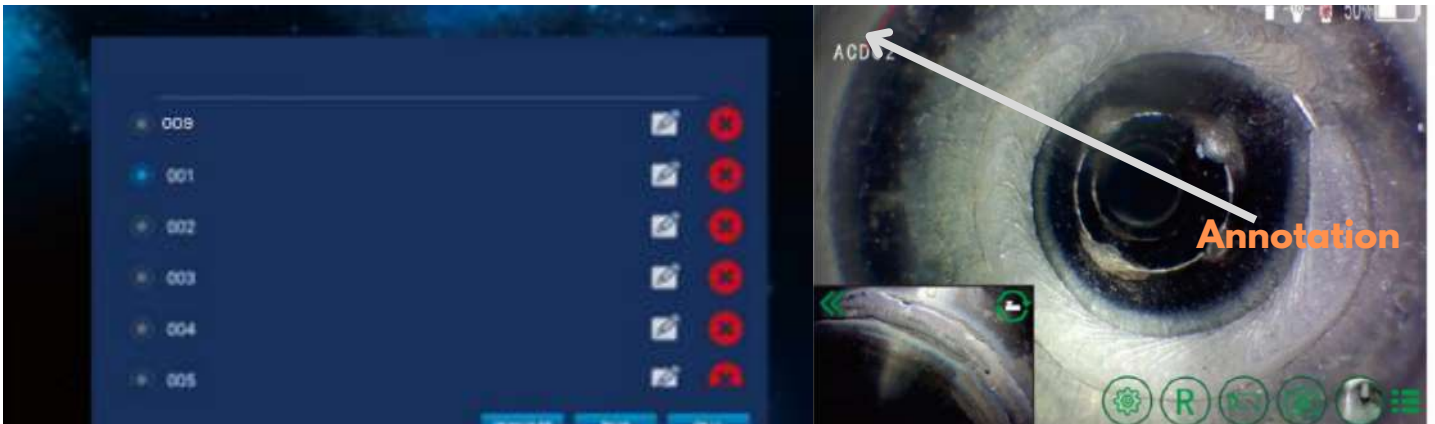


2. Touch control Key board with multi modes optional



3. Unlimited preset annotation as water mark in the picture, so it helps you find the inspection flow at the spot.

- Double -Top to change the location of the watermark in the picture.
- The replaceable high-capacity rechargeable lithium battery and charger are added to ensure the long-term service time.
- The 32GB of memory is used to save all of the data in JPG format.



Built in Bluetooth, WiFi Modules

These modules allow quick and easy image and video file transfer from the videoscope to a phone.



Wireless Bluetooth transmission



WiFi wireless transmission

Rubber-coated Anti-collision Design

The four corners of the monitor adopt rubber coated anti-collision design for more shock and fall resistance, making the unit more durable and rugged



Text and notes can be added to the picture, such as full-screen marks, handwritten lines, arrows, boxes, and circles.



Types of Industry



Designed Industries



power gen



oil & gas



Automotive



Chemical



Aero Space



Optikē
by Khush

Sl No	Product Description	Specifications
1	Display Screen Size	8"/5.1"/ 3.5" LCD in a Rugged Housing
2	Probe Diameter	2mm, 2.4mm, 2.8mm, 4.0mm, 6.0mm.
3	OutPut	USB 2.0 /HDMI (WIFI)
5	Pixel	160000/300000/1 million/2 million are self-compatible.
6	Probe Lenght	1m/2m/3m/4m/5m/8m/10m (customized)
7	DOF	4~100mm / 5~150mm/ 10~200mm / 15~ infinity (Customized)
8	FOV	70°,90°,120° ,140° (Customized)
9	Illumination	High Brightness Fiber optic Light Engine/Back-Mounted LED, Optical- Fiber Lighting 12000Lux, LED life span 30000hours
10	Operating Temperature	-30° - 80°C
11	Articulation	90° articulation on all four direction-Left, right, top and bottom
12	Image Sensor	CMOS
13	Touch Screen	Yes, LCD touch screen Display
14	Display Resolution	IPS HD 5.2" CPT , Resolution : 1024 x 768 HD Screen
15	Camera type	Video Camera
16	Brightness control	8/10 Level with Auto Adjustment
17	Internal Storage Type	Micro SD
18	Internal Storage Capacity	32 GB
19	Operating System	Android System
20	Platform type	Desktop based
21	Types of Licence	Perpetual
22	Operate	Touch Screen & Physical Buttons
23	Number of Batteries required for operation	Single Battery
24	Battery capacity	6000 mAh
25	Power source	4-hour battery life 230 Volt + 50Hz
26	Software	Picture to picture ,Self-Adaptation for lens: Phots, Video preview, pic Frozen, zoom in/ out, rotate, edit, rename, doodle remark.
27	Video	Mp4
28	Picture	JPG
29	Joystick	Mechanical control,360° All directions.
30	Languages	Its support Multiple Languages

Customisable Fixtures

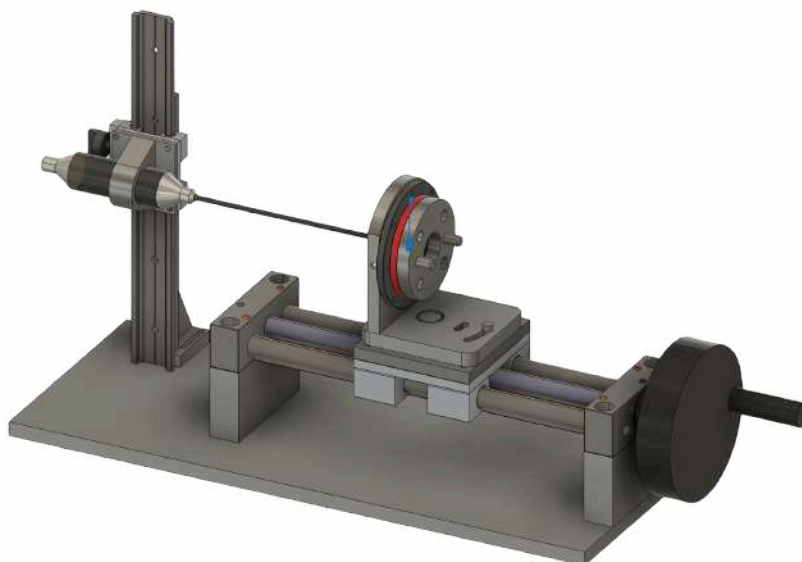
Our borescope system offers clear internal visual inspection of hard-to-reach areas with high precision. It includes a customizable fixture to securely hold various parts, ensuring repeatable and stable positioning. Ideal for fast, reliable inspection in quality-critical applications across industries.



**Articulated Adjustable
Arm Fixture with C-
Clamp**



**Rigid Borescope and Custom Mechanical
Fixture with X, Y, and Z-Axis Movement Control**



Customizable Borescope Fixture Design

We offer a complete solution tailored to your needs, from fixture design based on your part to manufacturing and seamless integration with our borescope.